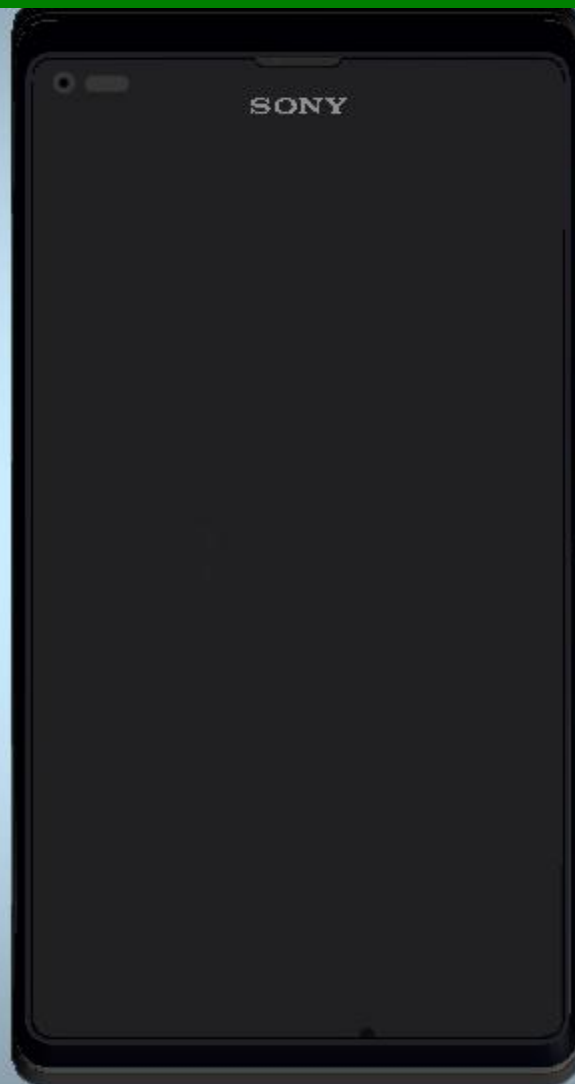


Component Replacement

- electrical -



Xperia™ L
C2104, C2105, S36h

CONTENTS

1 Replaceable Components 3

2 Component Placing..... 5

3 Additional Repair info 6

4 Revision History Error! Bookmark not defined.

For general information about electrical repair related issues, refer to 1220-1336: Generic Repair Manual - electrical

Test after electrical replacement: refer to 1273-1772 Mechanical Test Instruction

Do not remove shield can lids (Heat pasta are added and RF performance will be damaged)

1 Replaceable Components

EXPLANATION OF ABBREVIATIONS USED IN THE COLUMN 'COMMENTS' BELOW

COMPONENT LOCATION

P = Primary side

S = Secondary side

REPAIR METHOD

HA = Hot Air (removal & mounting)

ST = Soldering Tool (removal & mounting)

HA/ST = Hot Air for removal - Soldering Tool for mounting

BGA = BGA Station

BH = Bottom Heater

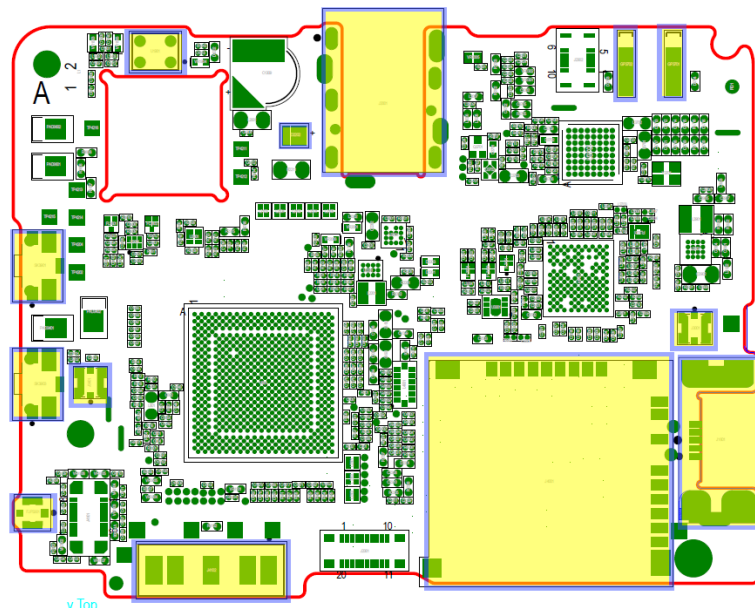
ADDITIONAL INFORMATION

⇒1 (2,3,4, etc.) = Proceed to 'Additional Repair Info' for further instructions in the indicated section(s).

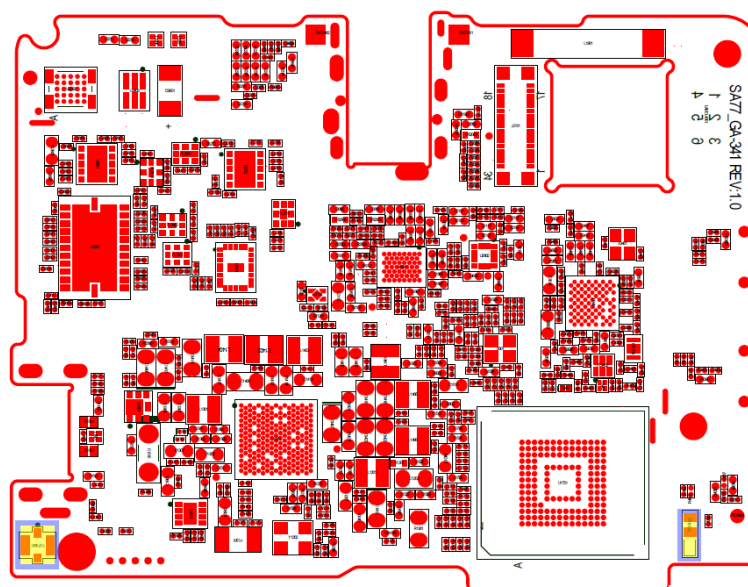
Position	Component	Part no.	Comments
D2202	LED White 2.04 x 1.64 x 0.75 mm	1257-1236	P HA+BH ⇨1
FJP3001	Conn Coax Receptacle 1p	1261-3591	S HA+BH ⇨2
FJP3301	Conn Coax Receptacle 1p	1261-3585	P HA+BH ⇨3
GP3701	Conn Leaf Spring Receptacle 1p Antenna Connector	2313000065W	P HA+BH ⇨4
GP3702	Conn Leaf Spring Receptacle 1p Antenna Connector	2313000065W	P HA+BH ⇨4
J1601	Conn USB micro B 5p	1261-7098	P HA+BH or BGA ⇨5
J2001	Conn Audio Jack 0p	1268-1840	P HA+BH or BGA ⇨6
J3001	Conn Coax Receptacle 1p Test switch	1276-1342	P HA+BH ⇨7
J3401	Conn Coax Receptacle 1p Test switch	1276-1342	P HA+BH ⇨8
J4001	SIM and SD Connector	1268-1850	P HA+BH or BGA ⇨9
J4102	Conn Pogopin 5p	1226-4176	P HA+BH or BGA ⇨10
PAD4102	Conn Leaf Spring Receptacle 1p	1200-2144	S HA+BH ⇨11
SK3901	Input switch	2322000053W	P HA/ST+BH ⇨12
SK3903	Input switch	2322000053W	P HA/ST+BH ⇨12
U1901	Microphone	1235-5983	P HA+BH ⇨13

2 Component Placing

To access the Component Placing document, double-click the icon below.
Applicable for on-screen viewing only – icon not shown on hard-copies.



Primary side



Secondary side

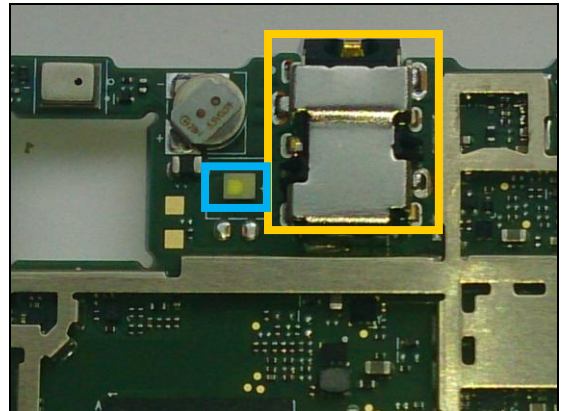
3 Additional Repair info

1

D2202

Replace if Flash LED not working

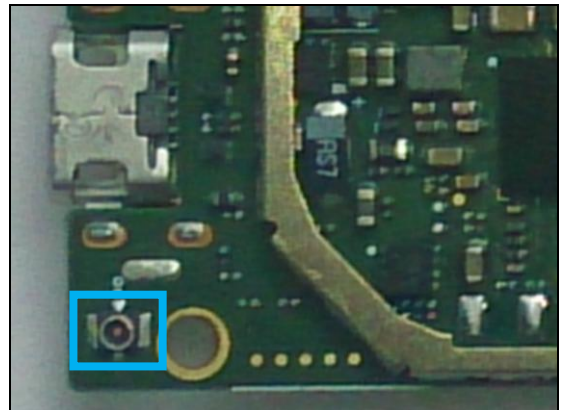
Protect the Audio connector with capton tape!



2

FJP3001

Replace if mechanical damaged (Bad network, main antenna)

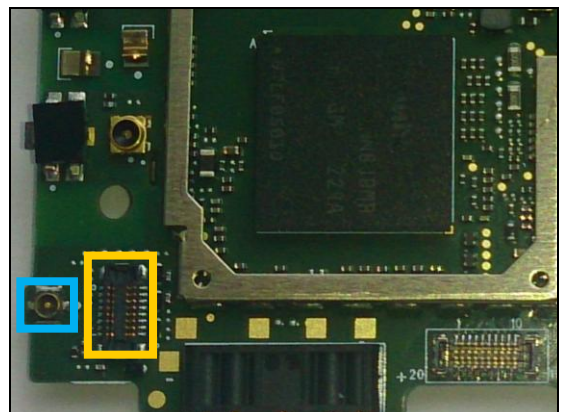


3

FJP3301

Replace if mechanical damaged (Bad network, Rx Diversity antenna)

Protect the BtB connector with capton tape!

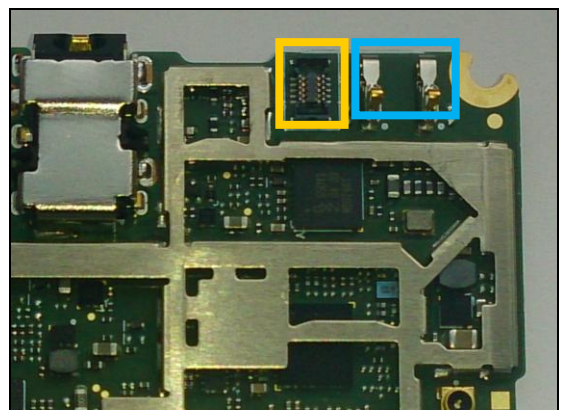


4

GP3701, GP3702

Replace if mechanical damaged (No or bad NFC)

Protect the BtB connector with capton tape!



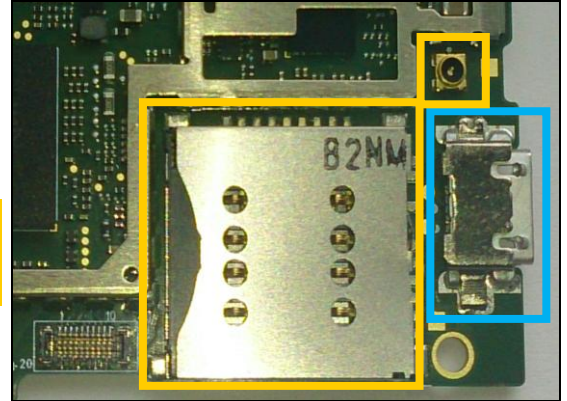
Repair Actions: Additional Repair Info

5

J1601

Replace if mechanical damaged (USB charger or data transfer not working)

Protect the RF and SIM connector with capton tape!

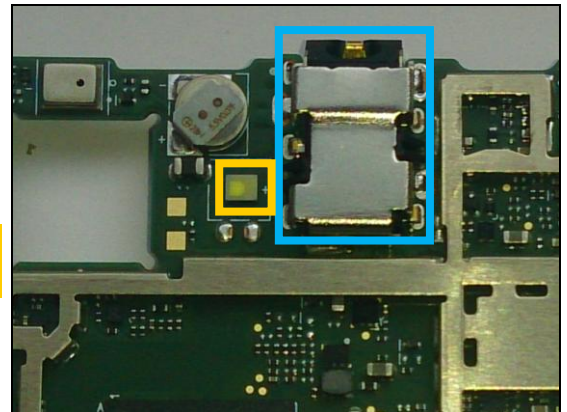


6

J2001

Replace if no audio from headset.

Protect the Flash LED with capton tape!

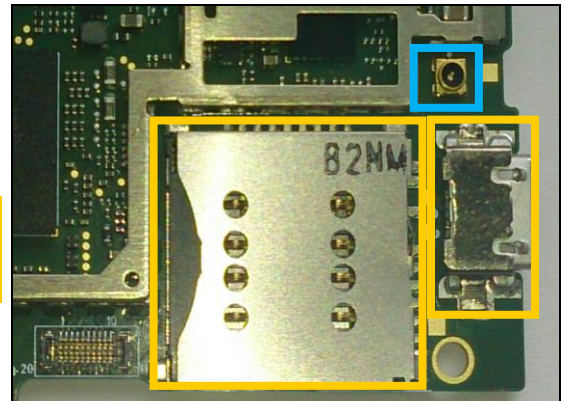


7

J3001

Replace if open circuit 1-2 (Bad network, main antenna)

Protect the SIM card and USB connectors with capton tape!

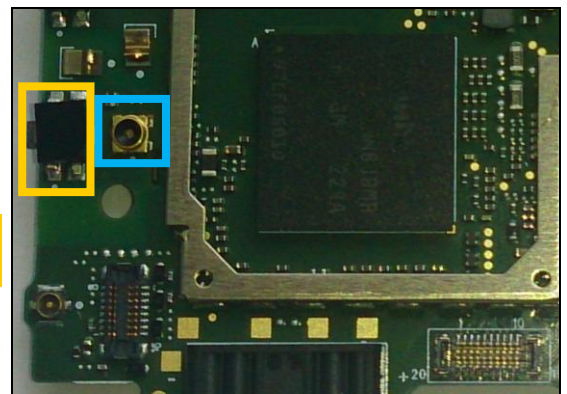


8

J3401

Replace if open circuit 1-2 (No or bad WLAN)

Protect the Volume Switch with capton tape!



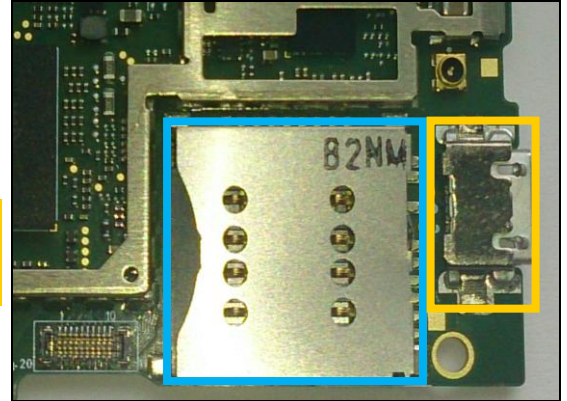
Repair Actions: Additional Repair Info

9

J4001

Replace if mechanical damaged (No network, restart, No SIM or SD card inserted)

Protect the USB connector with capton tape!

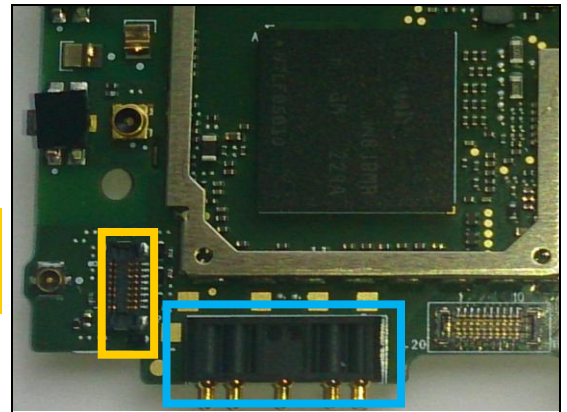


10

J4102

Replace if mechanical damaged. (Phone dead or power off)

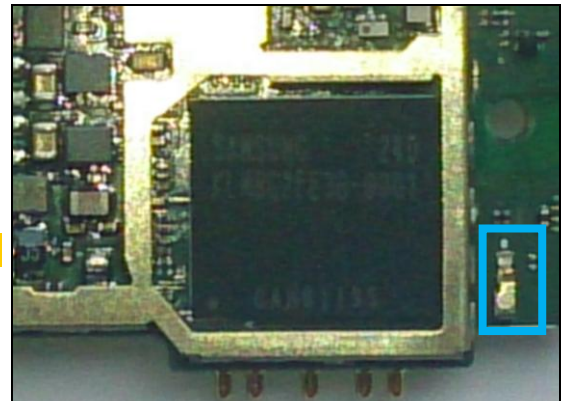
Protect the BtB connector with capton tape!



11

PAD4102

Replace if mechanical damaged. (Grounding Pin)

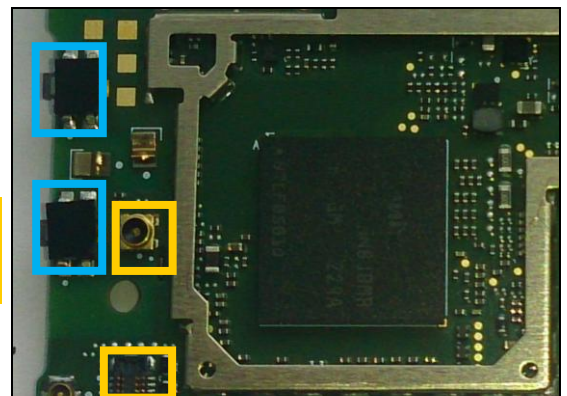


12

SK3901, SK3903

Replace if mechanical damaged (Volume up/down not working)

Protect the RF and BtB connectors with capton tape!



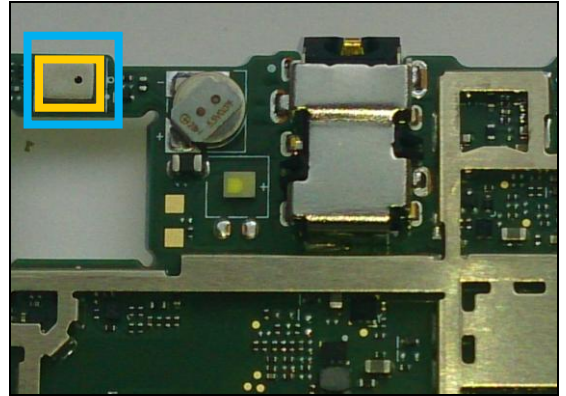
Repair Actions: Additional Repair Info

13

U1901

Replace if no audio from secondary mic

When replacing protect secondary mic with capton tape!



4 Revision History

Rev.	Date	Changes / Comments
1	2014-05-12	Initial release
2	2014-05-15	J4001 part no changed
3	2014-07-03	GP3701, GP3702, SK3901 and SK3903 added.